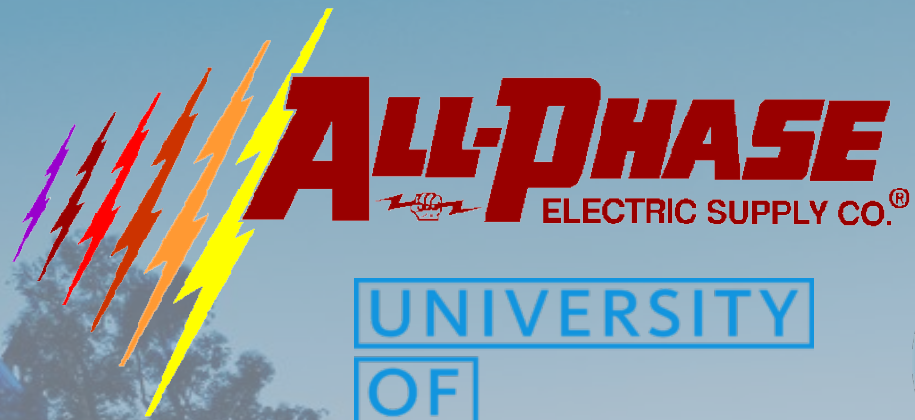




ALL-PHASE

 **ELECTRIC SUPPLY CO.®**

SERVICE. INTEGRITY. RELIABILITY.



UNIVERSITY
OF
CALIFORNIA



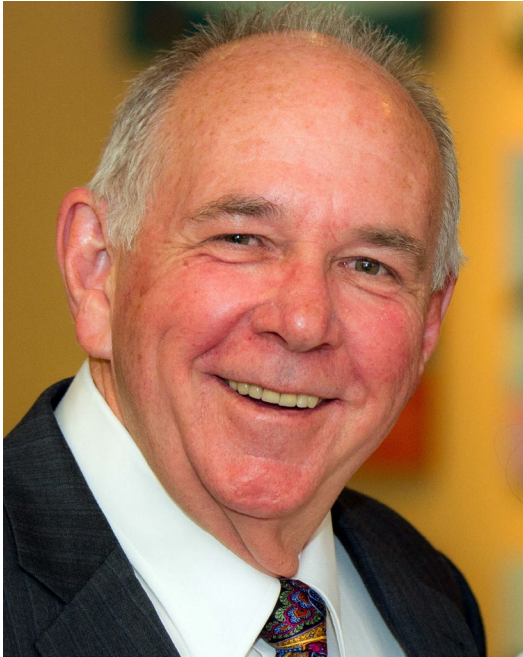
FOUNDATION *for* CALIFORNIA
COMMUNITY COLLEGES

CSU The California
State University



DGS
GENERAL SERVICES

Meet the All-Phase Team



Glenn Kriske
Territory Manager



Glinda Shipley
Contracts Executive



Amanda Meek
Energy Solutions



Christine Myers
Marketing

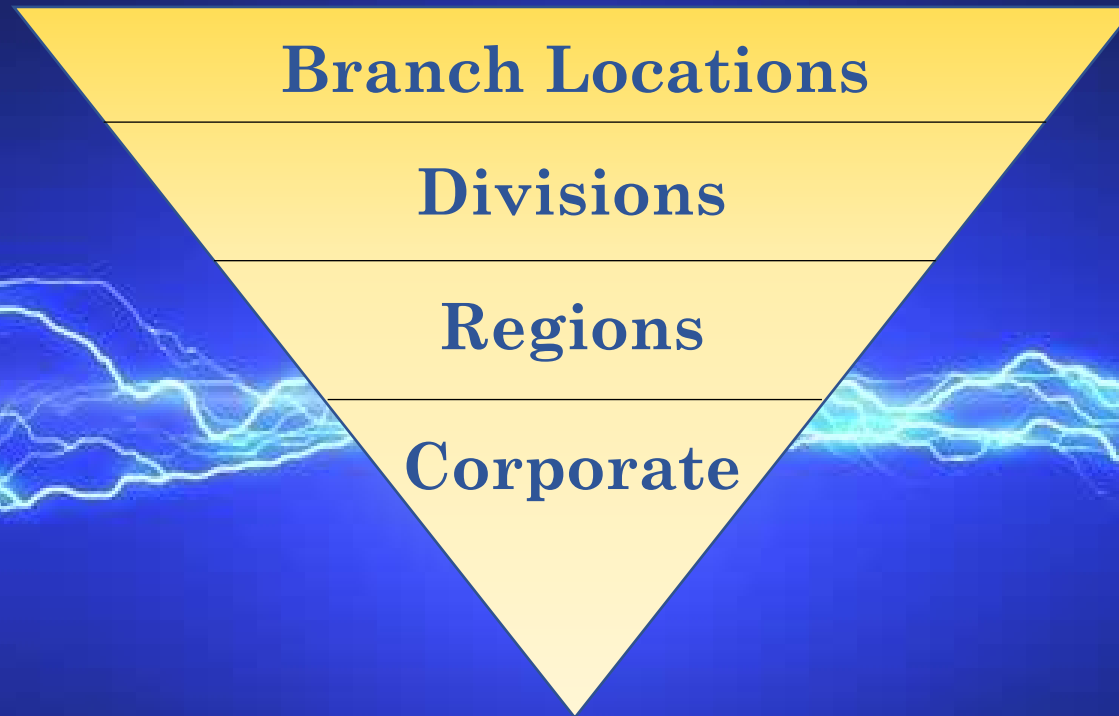
Agenda



- Introduction to All-Phase Electric/CED
- Supplier for all utilities including- PG&E, LADWP, SCE, and SDG&E
- Auditing services
- Sylvania Partner Highlight
- Phase 2 product lineup
- Lighting Controls
- Financing options



All-Phase/CED Structure



SERVICE. INTEGRITY. RELIABILITY.



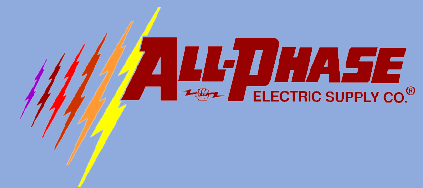
All-Phase History with UCOP

- Sole ownership of UCOP electrical and lighting MRO contracts over the past 20 years
- Sole ownership of UCOP MLC Phase 1 since inception
- Only MLC Phase 2 awardee to provide full line electrical and lighting products



Credentials

- Founded in 1957 with two locations in the San Francisco bay area
- 700+ U.S. locations & over 75 DBA's
- 1,200+ Locations in Canada, Europe, New Zealand & Australia
- Privately held and financially strong
- Tremendous buying power
- Expertise in multiple fields
- Customer Driven





California
DBA's



Utilities Served

All-Phase and its DBAs proudly serve the following utilities:



SOUTHERN CALIFORNIA
EDISON®

An EDISON INTERNATIONAL® Company



Liberty
Utilities®



Los Angeles
Department of
Water & Power





California Credentials

- 127 stocking locations statewide
- Five distribution hubs
- Quick and efficient product delivery with our own fleet of trucks
- Teams of Project Managers, Auditors, and Application Engineers
- Communication to all campuses through Jaggaer, AggieBuy, Oracle, BruinBuy, etc using Punch out and Hosted catalogs



CED/All-Phase Capabilities

Only distributor with full line electrical and lighting contracts for:



FOUNDATION *for* CALIFORNIA
COMMUNITY COLLEGES



All-Phase/CED Objectives

- Management Training Program recruits from all UC, CSU, FCCC, and private campuses
- Leading the way with energy efficient electrical solutions including:
 - Energy audits
 - Lighting retrofit
 - Solar
 - EV charging stations
 - Lighting controls
 - Pathogen Mitigation solutions



Audit with All-Phase includes:

- Pre-audit meeting discussion:
 - Existing lighting systems
 - Any current issues the client may be experiencing
- Walk each area of the facility included in the lighting audit
- Capture all lighting info per space/floor
- Photographic documentation with audio notes
- Post-audit meeting
 - Confirmation of audit completion
 - Answer any additional questions the client may have

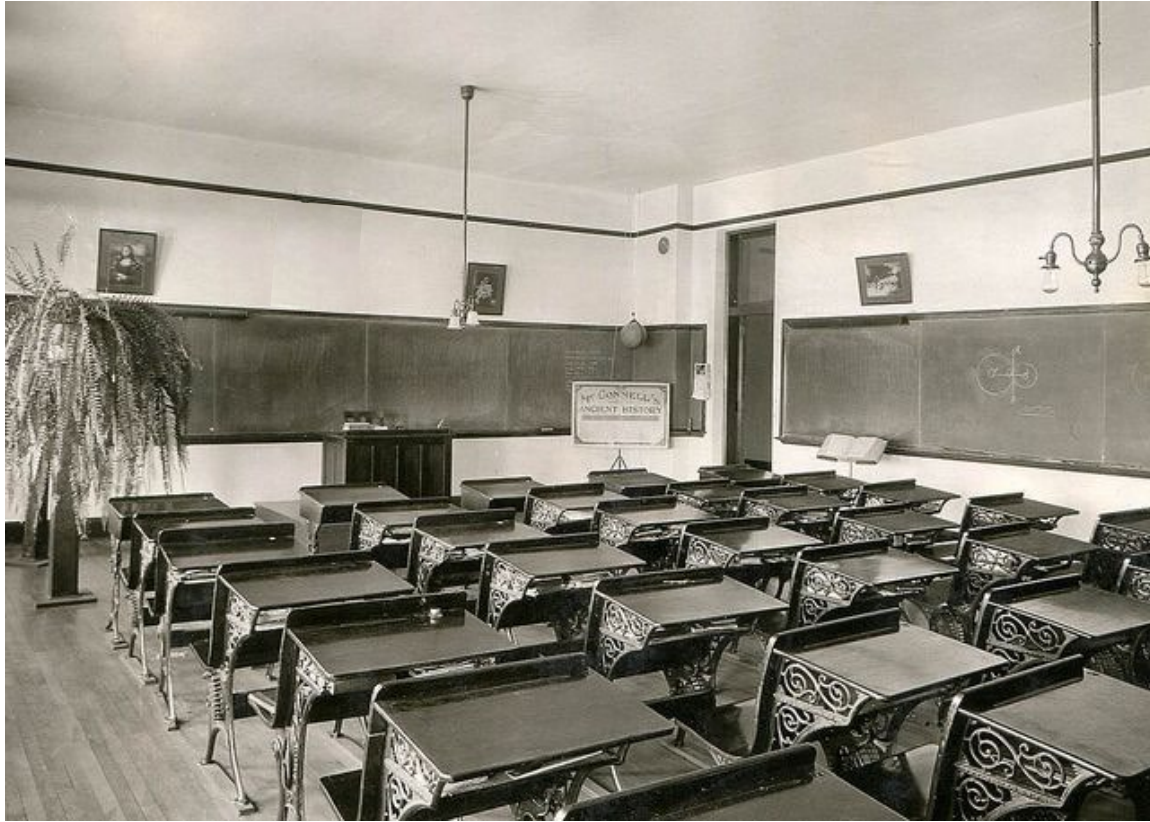


Partner Highlight

SYLVANIA



SYLVANIA: A startup - with a heritage of >115 years



1906

SYLVANIA trademark registration



2021

Global leader in advancing light with LED



SYLVANIA Professional Portfolio

Having a complete portfolio of products.



Sylvania: Market Leadership



ADEX 2021 Platinum awards “The largest and most prestigious design competition in the architecture and design industry,” ADEX is the *industry’s stamp of approval for superior design of architecture and design projects and related furnishings and building materials.*

National Lighting Bureau’s (NLB) Trusted Warranty Program
awards certificates to lighting and lighting component companies meeting the NLB’s objective quality standards and practices for warranty administration.



Phase 2 Product Lineup- Linear LED Lamps and Drivers

LED Type C System

LED T8 External Dimmable Driver System
for Maximum Energy Savings through Controls



Specifications

Energy Data (Driver)	Lighting Data
Ambient Operating Temperature: -4°F to 131°F (-20°C to 55°C)	Lumen Output: see specification table
Max Case Temperature: $T_c \leq 75^\circ\text{C}$	Lumens Per Watt (Driver + Lamps): $\geq 120\text{lpw}$
EMI/RFI: Comply with FCC Part15 Class A	Correlated Color Temperature (CCT): 3500K, 4100K, 5000K
Safety Requirement: Comply with UL 8750; EN61347	Color Fidelity Rf: ≥ 90
Sound Rated: Class A	
Comply With ANSI/IEEE C62.41, Class A Operation	

Product Offering

Length	Color Temperature	Color Fidelity
48 in	3500K, 4100K, 5000K	>90
36 in.	3500K, 4100K, 5000K	>90
24 in.	3500K, 4100K, 5000K	>90

Specifications and Certifications





SYLVANIA Luminaires

ValueLED™ Lumen Selectable Retrofit DoorKit

Application

The ValueLED Retrofit DoorKit is offered in three sizes (1'x4', 2'x2', and 2'x4') and is ideal for illuminating offices, retail spaces, hallways, multipurpose rooms and hospitality areas.

Benefits and Features

- Lumen selectability increases the versatility of this product
- These retrofit luminaires are designed to be installed in existing troffers
- Ideal in retrofit applications, offering up to 61% energy savings when compared to traditional lighting technologies
- Additional energy savings can be obtained by taking advantage of the standard 0-10V dimming driver
- Up to 125 LPW
- 0-10V Dimmable
- 93 CRI



Specifications

Energy Data (Driver)	Lighting Data
Ambient Operating Temperature: -4°F to 120°F (-20°C to 50°C)	Lumen Output: see specification table
Max Case Temperature: Tc≤75°C	Lumens Per Watt (Driver + Lamps): ≥125lpw
EMI/RFI: Comply with FCC Part15 Class A	Correlated Color Temperature (CCT): 4000K
Safety Requirement: Comply with UL 8750; EN61347	Color Fidelity Rf: ≥90
Sound Rated: Class A	
Comply With ANSI/IEEE C62.41, Class A Operation	

Specifications and Certifications



SYLVANIA Luminaires

ValueLED™ Lumen Selectable Volumetric Troffer

Application

The ValueLED Volumetric Troffer is offered in three sizes (1'x4', 2'x2', and 2'x4') and is ideal for illuminating offices, retail spaces, hallways, multipurpose rooms and hospitality areas.

Benefits and Features

- Lumen selectability increases the versatility of this product
- Ideal in retrofit applications, offering up to 61% energy savings when compared to traditional lighting technologies
- Additional energy savings can be obtained by taking advantage of the standard 0-10V dimming driver
- Up to 125 LPW
- 93 CRI



Specifications

Energy Data (Driver)

Ambient Operating Temperature: -4°F to 120°F (-20°C to 50°C)

Max Case Temperature: $T_c \leq 75^\circ\text{C}$

EMI/RFI: Comply with FCC Part15 Class A

Safety Requirement: Comply with UL 8750; EN61347

Sound Rated: Class A

Comply With ANSI/IEEE C62.41, Class A Operation

Lighting Data

Lumen Output: see specification table

Lumens Per Watt (Driver + Lamps): $\geq 125\text{lpw}$

Correlated Color Temperature (CCT): 4000K

Color Fidelity Rf: ≥ 90

Specifications and Certifications





Solar

- Largest solar distributors nationwide | CED Greentech
- Square-D switch gear for solar panel installations
- Southern California Edison award



Electric Vehicle Chargers

Installations at major cities, universities, and parking structures

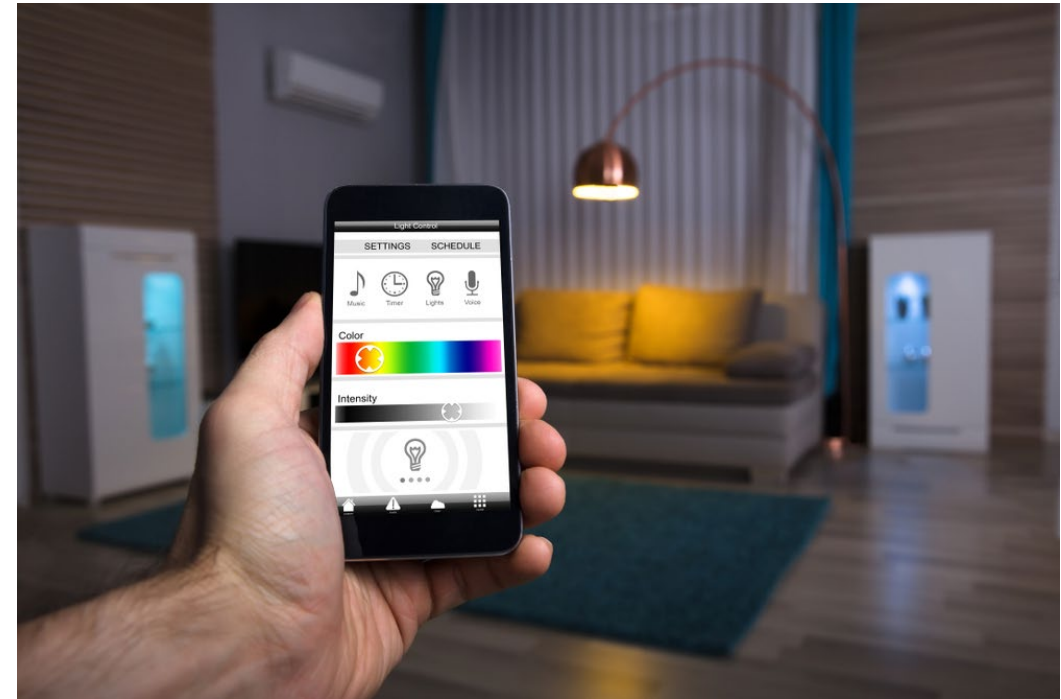


All-Phase Lighting Control Partners

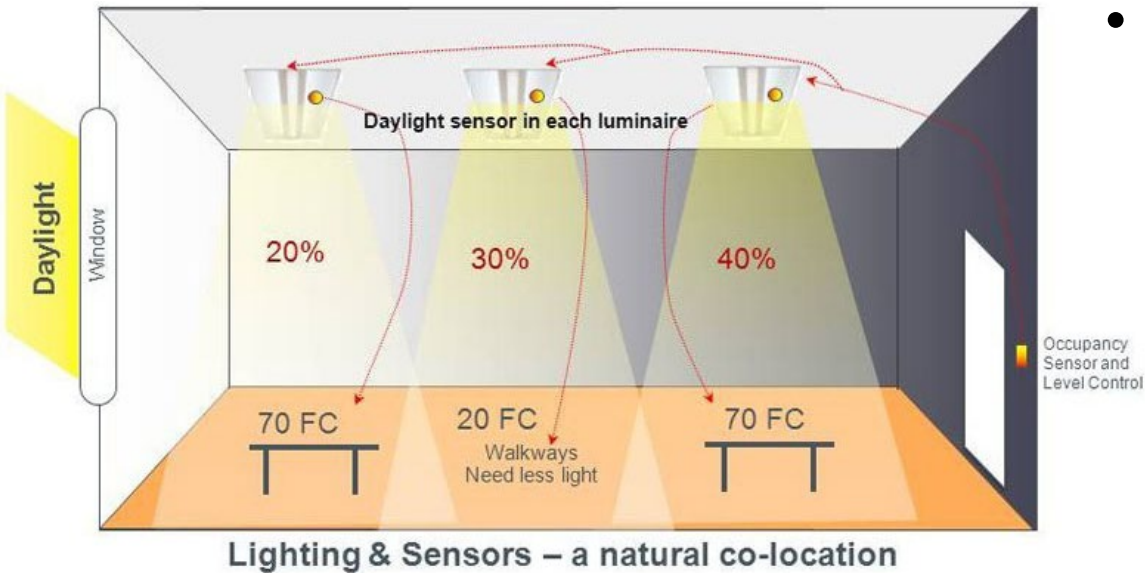


Benefits to Lighting Control & Dimming Systems

- Save money and energy
- Increases comfort
- Improves productivity and safety
- Flexible lighting customization
- Several partners meet the global standard for IoT Security as certified by ioXt Alliance

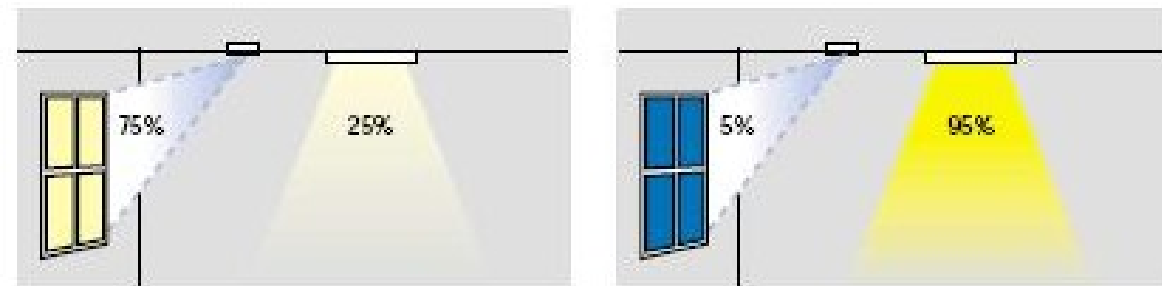


Daylight Harvesting



- Daylight harvesting is an energy management technique that reduces overhead lighting use by:

- Utilizing the ambient (natural & artificial) light present in a space
- Dimming or switching OFF lighting when sufficient ambient light is present or when the space is unoccupied
- Utilizing zones to stagger the dimming and switching of lighting loads depending on their distance from ambient light sources, such as windows and skylights.



The New York Times Building Controls

- The 20-story building uses a computer controlled, state of the art Lutron Quantum total light management system that automatically dims or switches all lighting.
- Thanks to the system, The New York Times Building is saving 70% of its lighting electricity, resulting in energy savings of \$600,000 annually.
- The reduced use of energy presents the equivalent of 3,300 tons of carbon emissions each year.



Lighting Sterilization and Disinfection Products



ALKCO 254nm UV-C



Acuity Brands FAR UV-C 222nm



SAM Self-Contained 254nm
UV-C and HEPA Filtration



GE Current 365nm DisInFx
RVU



Energy Focus Mobile UV-C





ON BILL FINANCING

Financing Options



REBATE PROGRAMS



Contact Us For Inquiries Or To Purchase

Contact Information:

Email:

MLC@AllPhaseElectricSupply.com

Jaime Salazar, Major Projects Manager:

(818) 524-7516

All-Phase Electric Supply is proud to be partnered with the
Million LED Challenge Program.



Volume Rebate Incentive



2% rebate paid on all electrical and lighting purchases.



Thank you!



Questions?

